

DEPARTMENT OF THE ARMY TECHNICAL MANUAL

ORGANIZATIONAL, DIRECT AND GENERAL SUPPORT MAINTENANCE

REPAIR PARTS AND SPECIAL TOOLS LIST

FOR

TRAINER, MORTAR: PNEUMATIC, M32 W/ E

(6920-540-6087)

AND

M32A1 W/ E

(6920-045-6537)

Headquarters, Department of the Army, Washington, D. C.

15 October 1971

Current as of: 9 August 1971

This revision updates the repair parts and special tools list to current format according to AR 700-18.

Section		Page
I.	INTRODUCTION.....	2
II.	REPAIR PARTS LIST.....	6
III.	SPECIAL TOOLS LIST.....	7
IV.	REPAIR PARTS LIST.....	8
V.	SPECIAL TOOLS LIST.....	11
VI.	FEDERAL STOCK NUMBER AND REFERENCE NUMBER INDEX.....	12

LIST OF ILLUSTRATIONS

<i>Figure</i>	<i>Title</i>	
1.	Subcaliber mortar trainer M32A1-partially exploded view.....	13
2.	25-MM training projectile M379-exploded view.....	13
3.	Regulator assembly-exploded view.....	14
4.	Barrel and valve assembly-exploded view.....	15
5.	Trainer carrying case w/ tools and equipment.....	15

* This manual supersedes TM 9-6920-212-24P, 15 September 1960.

**ORGANIZATIONAL, DIRECT AND GENERAL SUPPORT
MAINTENANCE REPAIR PARTS AND
SPECIAL TOOLS LIST**

Section I. INTRODUCTION

Scope

This manual lists repair parts and special tools required for the performance of organizational, direct and general support maintenance of the pneumatic mortar trainer M32 and M32AI W / E.

2. General

The repair parts and special tools list is divided into the following sections:

a. Repair Parts List-Section II. A list of repair parts authorized at the organizational level for the performance of maintenance. The list also includes parts which must be removed for replacement of the authorized parts. Parts lists are composed of functional groups with the parts in each group listed in figure and item number sequence.

b. Special Tools List-Section II. A list of special tools, test and support equipment authorized for the performance of maintenance at the organizational level.

c. Repair Parts List-Section IV. A list of repair parts authorized at the direct support and general support levels for the performance of maintenance. The list also includes parts which must be removed for replacement of the authorized parts. Parts lists are composed of functional groups with the parts in each group listed in figure and item number sequence.

d. Special Tools List-Section V. A list of special tools, test and support equipment authorized for the performance of maintenance at the direct support and general support levels.

e. Federal Stock Number and Reference Number Index-Section VI. A list, in ascending numerical sequence, of all Federal stock numbers appearing in the listings, followed by a list, in alphameric sequence, of all reference numbers appearing in the listings. Federal stock numbers and reference numbers are cross-referenced to each illustration figure and item number appearance.

3. Explanation of Columns

The following provides an explanation of columns found in the tabular listings.

a. Source, Maintenance, and Recoverability Codes (SMR).

(1) *Source code.* Indicates the source for the listed items. Source codes are:

<i>Code</i>	<i>Explanation</i>
P.....	Repair parts, special tools and test equipment supplied from the GSA / DSA or Army supply system and authorized for use at indicated maintenance categories.
P2.....	Repair parts, special tools and test equipment which are procured and stocked for insurance purposes because the combat or military essentiality of the end item dictates that a minimum quantity be available in the supply system.
P9.....	Assigned to items which are NSA design controlled: unique repair parts, special tools, test, measuring, and diagnostic equipment which are stocked and supplied by the Army COMSEC Logistic System and which are not subject to the provisions of AR 380-41.
P10.....	Assigned to items which are NSA design controlled: special tools, test, measuring, and diagnostic equipment for COMSEC support which are accountable under the provisions of AR 380-41 and which are stocked and supplied by the Army COMSEC Logistic System.
M.....	Repair parts, special tools and test equipment which are not procured or stocked as such in the supply system but are to be manufactured at indicated maintenance levels.
A.....	Assemblies which are not procured or stocked as such but are made up of two or more units. Such component units carry individual stock numbers and descriptions, are procured and stocked separately, and can be assembled to form the required assembly at indicated maintenance categories.
X.....	Parts and assemblies that are not procured or stocked because the failure rate is normally below that of the applicable end item or component. The failure of such part or assembly should result in retirement of the end item from the supply system.
X1.....	Repair parts which are not procured or stocked. The requirement for such items will be filled by the next higher assembly or component.
X2.....	Repair parts, special tools and test equipment which are not stocked and have no foreseen mortality. The indicated maintenance category requiring, such repair parts will attempt to

obtain the parts through cannibalization or salvage. The item may be requisitioned, with exception data, from the end item manager for immediate use.

G.....Major assemblies that are procured with PEMA funds for initial issue only as exchange assemblies at I)S and GS level. These assemblies will not be stocked above DS and GS level or returned to depot supply level.

NOTE

Cannibalization or salvage may be used as a source of supply for any items source coded above except those coded X I and aircraft support items as restricted by AR 700-42.

(2) *Maintenance code.* Indicates the lowest category of maintenance authorized to install the repair part and/or use the special tool or test equipment for each application. Capabilities of higher maintenance categories are considered equal or better. Maintenance codes are:

<i>Code</i>	<i>Explanation</i>
C.....	Crew / operator
O.....	Organizational maintenance
F.....	Direct support maintenance
H.....	General support maintenance
D.....	Depot maintenance

(3) *Recoverability code.* indicates whether unserviceable items should be returned for recovery or salvage. Items not coded are non-recoverable.

Recoverability codes are:

<i>Code</i>	<i>Explanation</i>
R.....	Repair parts (assemblies and components), special tools and test equipment which are considered economically repairable at direct and general support maintenance levels. When the item is no longer economically repairable, it is normally disposed of at the GS level. When supply considerations dictate, some of these repair parts may be listed for automatic return to supply for depot level repair as set forth in AR 710-50. When so listed, they will be replaced by supply on an exchange basis.
S.....	Repair parts, special tools and test equipment, and assemblies which are economically repairable at DS and GS activities and which normally are furnished by supply on an exchange basis. When items are determined by a GSU to be uneconomically repairable, they will be evacuated to a depot for evaluation and analysis before final disposition.
T.....	High dollar value recoverable repair parts, special tools and test equipment which are subject to special handling and are issued on an exchange basis. Such items will be repaired or overhauled at depot maintenance

activities only. No repair may be accomplished at lower levels.

U.....Repair parts, special tools and test equipment specifically selected for salvage by reclamation units because of precious metal content, critical materials, high dollar value, or reusable casings or castings.

b. *Federal Stock Number.* Indicates the Federal stock number assigned to the item and will be used for requisitioning purposes.

c. *Description.* Indicates the Federal item name and a minimum description required to identify the item. The last line indicates the reference number followed by the applicable Federal Supply Code for Manufacturer (FSCMI in parentheses. The FSCM is used as an element in item identification to designate manufacturer or distributor or Government agency, etc and is identified in SB 708-42. Items that are included in kits and sets are listed below the name of the kit or set with quantity of each item in the kit or set indicated in front of the item name.

d. *Unit of Measure (U/M).* Indicates the standard or basic quantity by which the listed item is used in performing the actual maintenance function. This measure is expressed by a two-character alphabetical abbreviation, e.g ea, in, pr, etc., and is the basis used to indicate quantities and allowances in subsequent columns. When the unit of measure differs from the unit of issue, the lowest unit of issue -that will satisfy the required units of measure will be requisitioned.

e. *Quantity Incorporated in Unit.* Indicates the quantity of the item used in the breakout shown on the illustration figure, which is prepared for a functional group, subfunctional group, or an assembly. A "V" appearing in this column in lieu of a quantity indicates that no specific quantity is applicable. e.g shims, spacers, etc.

f. *15-Day Organizational Maintenance Allowances.*

(1) The allowance columns are divided into four subcolumns. Indicated in each subcolumn is the total quantity of items authorized for the number of equipments supported. Subsequent appearances have the letters "REF" in the allowance columns, indicating that the total allowance quantities are shown with the first appearance of the item where shown as a supply item. Items authorized for use as required, but not for initial stockage. are identified with an asterisk in the allowance column.

(2) The quantitative allowances for organizational level of maintenance represent one initial prescribed load for a 15-day period for the number of equipments supported. Units and organizations authorized additional prescribed loads will multiply the number of prescribed loads authorized b, the quantity of repair parts reflected in the appropriate density column to obtain the total quantity of repair parts authorized.

(3) Organizational units providing maintenance for more than 100 of these equipments shall determine the total quantity of parts required by converting the equipment quantity to a decimal factor by placing a decimal point before the next to last digit of the number to indicate hundredths, and multiplying the decimal factor by the parts quantity authorized in the 51-100 allowance column. Example: authorized allowance for 51-100 equipments is 12; for 140 equipments multiply 12 by 1.40; indicating 16.80 rounded off to 17 parts required.

(4) Subsequent changes to allowance lists will be accomplished in accordance with AR 735-35. In addition, the major commands will be authorized to approve reductions in stockage allowances (range and quantity). If additional items are considered necessary, recommendation should be forwarded to Commanding General, Headquarters, U. S. Army Weapons Command, ATTN: AMSWE-MAP, Rock Island, Illinois, 61201, for exception or revision to the allowance list.

g. 30-Day DS/GS Maintenance Allowances.

NOTE

Allowances in GS column are for GS maintenance only.

(1) The allowance columns are divided into three subcolumns. Indicated in each subcolumn, opposite the first appearance of each item in each category of maintenance, is the total quantity of items authorized for the number of equipments supported. Subsequent appearances of the same item will have the letters "REF" in the applicable allowance columns, indicating total allowance quantities will be shown with the first appearance of the item when shown as a supply item. Items authorized for use as required but not for initial stockage are identified with an asterisk in the allowance column.

(2) The quantitative allowances for DS/GS levels of maintenance will represent initial stockage for a 30-day period for the number of equipments supported.

(3) Determination of the total quantity of parts required for maintenance of more than 100 of these equipments can be accomplished by converting the equipment quantity to a decimal factor by placing a decimal point before the next to last digit of the number to indicate hundredths and multiplying the decimal factor by the parts quantity authorized in the 51-100 allowance column. Example: authorized allowance for 51-100 equipments is 40; for 150 equipments multiply 40 by

1.50, indicating 60 parts required.

h. 1-Year Allowances Per 100 Equipments/Contingency Planning Purposes. This column indicates opposite the first appearance of each item the total quantity required for distribution and contingency planning purposes. Subsequent appearances of the same item will have the letters "REF" in this column when shown as a supply item. The range of items indicates total quantities of all authorized items required to provide for adequate support of 100 equipments for one year.

i. Depot Maintenance Allowance Per 100 Equipments. This column indicates opposite the first appearance of each item the total quantity authorized for depot maintenance of 100 equipments. Subsequent appearances of the same item will have the letters "REF" in this column when shown as a supply item. Items authorized for use but not for initial stockage are identified with an asterisk in the allowance column.

j. Illustration. This column is divided as follows:

(1) Figure number. Indicates the figure number of the illustration on which the item is shown.

(2) Item number. Indicates the callout number used to reference the item on the illustration.

4. Special Information

The following publication pertains to the pneumatic mortar trainer M32 and M32A1 W / E:

TM 9-6920-212-14Subcaliber Mortar Trainer
M32 With 25-MM
Training Projectile M379

5. How to Locate Repair Parts

a. When Federal stock number or reference number is unknown:

(1) First. Using the table of contents determine the functional group within which the repair part belongs. This is necessary since illustrations are prepared for functional groups and listings are divided into the same groups.

(2) Second. Find the illustration covering the functional group to which the repair part belongs.

(3) Third. Identify the repair part on the illustration and note the illustration figure and item number of the repair part.

(4) Fourth. Using the Repair Parts Listing, find the functional group to which the repair part belongs and locate the illustration figure and item number noted on the illustration.

b. When Federal stock number or reference number is known:

(1) *First.* Using the index of Federal Stock Numbers and Reference Numbers find the pertinent Federal stock number or reference number. This index is in ascending FSN sequence followed by a list of reference numbers in ascending alphameric sequence, cross-referenced to the illustration figure number and item number.

(2) *Second.* Using the Repair Parts Listing, find the functional group of the repair part and the illustration figure number and item number referenced in the index of Federal Stock Numbers and Reference Numbers.

6. Abbreviations

<i>Abbreviation</i>	<i>Explanation</i>
cd	cadmium
int	internal
od	outside diameter
psi	pounds per square inch
thd	thread

7. Recommendations for Maintenance Publications Improvements

You can improve this manual by calling attention to errors and by recommending improvements, using DA Form 2028 (Recommended Changes to Publications) or by a letter, and mailing directly to the Commanding General, Headquarters, U. S. Army Weapons Command, ATTN: AMSWE-MAP, Rock Island, Illinois 61201. A reply will be furnished directly to you.

SECTION II. REPAIR PARTS LIST

TM 9-6920-212-24P

(1) SMR CODE	(2) FEDERAL STOCK NUMBER	(3) DESCRIPTION REFERENCE NUMBER & MFR CODE ----- USABLE ON		(4) UNIT OF MEAS	(5) QTY INC IN UNIT	(6) 15-DAY ORGANIZATIONAL MAINTENANCE ALW				(7) ILLUSTRATION	
						(a) 1-5	(b) 6-20	(c) 21-50	(d) 51-100	(a) FIGURE NO.	(B) ITEM NO.
P-O-	6920-789-0473	HOSE ASSEMBLY:..... 8768050 (19204)	EA	1	*	*	*	*	1	6	
P-O-	1305-792-7389	HOSE PLUG, PROJECTILE:..... 8768054 (19206)	EA	20	*	*	*	*	2	1	
P-O-	5340-808-3957	RING, RETAINING: INT, S, CD-W/CHROMATE, 0.620 HOUSING DIA MS 16625-1036 (96906)	EA	20	*	*	*	*	2	2	
P-O-	1305-792-7390	RING, RETAINING:..... 8768056 (19206)	EA	24	*	*	*	*	2	3	
P-O-	1305-792-7391	SPRING, HELICAL, COMPRESSION: 8768057 (19206)	EA	20	*	*	*	*	2	4	
P-O-	1305-792-7392	PIN, FIRING: 8768055 (19206)	EA	20	*	*	*	*	2	5	
P-O-	5330-789-0468	GASKET: CONNECTOR ASSY 8768065 (19204)	EA	1	*	*	*	*	3	3	
P-O-	7690-891-7886	DECAL WARNING: BLACK LEGEND, REDBACK-..... GROUND, 6500 LG, 6.000 W 11577604 (19206)	EA	1	*	*	*	*	5	23	

SECTION III. SPECIAL TOOLS LIST

TM 9-6920-212-24P

(1) SMR CODE	(2) FEDERAL STOCK NUMBER	(3) DESCRIPTION REFERENCE NUMBER & MFG CODE USABLE ON CODE		(4) UNIT OF MEAS	(5) QTY INC IN UNIT	(6) 15-DAY ORGANIZATIONAL MAINTENANCE ALW				(7) ILLUSTRATION	
						(a) 1-5	(b) 6-20	(c) 21-50	(d) 51-100	(a) FIGURE NO.	(b) ITEM NO.
P-C-	6920-977-2687	BOX., BLANK CARTRIDGE: 8768005 (19206)	EA	1	*	*	*	*	1	8	
P-C-	1005-977-2691	BRUSH, CLEANING: BARREL 8768034 (19206)	EA	1	*	*	*	*	1	9	
P-C-	6920-789-0463	COVER, GAGE FACE: 60-MM, 1000 RANGE..... 8768045 (19204)	EA	1	*	*	*	*	5	2	
P-C-	6920-789-0464	COVER, GAGE FACE: 60-MM, 2000 RANGE..... 8768046 (19204)	EA	1	*	*	*	*	5	3	
P-C-	6920-789-0459	COVER, GAGE, FACE: 81-MM, 500 RANGE..... 8768047 (19204)	EA	1	*	*	*	*	5	4	
P-C-	6920-789-0460	COVER, GAGE FACE: 81-MM, 1000 RANGE..... 8768048 (19204)	EA	1	*	*	*	*	5	5	
P-C-	6920-789-0461	COVER, GAGE FACE: 81-MM, 2000 RANGE..... 8768049 (19204)	EA	1	*	*	*	*	5	6	
P-C-	6920-789-0462	COVER, GAGE FACE: 60-MM, 500 RANGE..... 8768044 (19204)	EA	1	*	*	*	*	5	7	
P-C-	6920-789-0466	COVER, GAGE FACE: 4.2-IN., 1000 RANGE 8768042 (19204)	EA	1	*	*	*	*	5	8	
P-C-	6920-789-0467	COVER, GAGE FACE: 4.2-IN., 2000 RANGE 8768043 (19204)	EA	1	*	*	*	*	5	9	
P-C-	5120-240-5292	KEY, SOCKET HEAD SCREW: 41-W-2450 (19204)	EA	1	*	*	*	*	5	10	
P-C-	6920-065-4342	BAR, PROJECTILE CLEANER: 8767992 (19206)	EA	1	*	*	*	*	5	11	
P-C-	6920-789-0458	RING, ADAPTER, INNER: 4.2-IN. 8768068 (19204)	EA	1	*	*	*	*	5	12	
P-C-	6920-789-0457	RING, ADAPTER, INNER: 81-MM..... 8768069 (19204)	EA	1	*	*	*	*	5	13	
P-C-	5120-977-2694	WRENCH, TRAINER, MORTAR: 8768085 (19206)	EA	1	*	*	*	*	5	14	
P-C-	6920-789-0455	RING, ADAPTER, OUTER: 60-MM 8768071 (19204)	EA	1	*	*	*	*	5	17	
P-C-	6920-789-0454	RING, ADAPTER, OUTER: 81-MM 8768072 (19204)	EA	1	*	*	*	*	5	18	
P-C-	6920-789-0456	RING, ADAPTER, OUTER: 4.2-IN..... 8768070 (19204)	EA	1	*	*	*	*	5	19	

SECTION IV. REPAIR PARTS LIST--Continued

TM 9-6920-212-24P

(1) SMR CODE	(2) FEDERAL STOCK NUMBER	(3) DESCRIPTION REFERENCE NUMBER & MFR. CODE USABLE ON CODE		(4) UNIT OF MEAS	(5) QTY INC IN UNIT	(6) 30 DAY DS MAINT ALLOWANCE			(7) 30DAY GS MAINT ALLOWANCE			(8) 1-YR ALW PER 100 EQUIP CNTGCY	(9) DEPOT MAINT ALW PER 100 EQUIP	(10) ILLUSTRATION	
						(a)	(b)	(c)	(a)	(b)	(c)			(a)	(b)
						1-20	21-50	51-100	1-20	21-50	51-100			FIGURE NO.	ITEM NO/
P-F-R	8120-884-1923	VALVE	EA	1	*	*	*	*	*	*	*	..	1	4	
		8768037 (19206)													
P-F-R	8120-884-1924	CYLINDER, COMPRESSED GAS: BOTTLE	EA	1	*	*	*	*	*	*	*	..	1	5	
		8768036 (19206)													
P-O-	6920-789-0473	HOSE ASSEMBLY:.....	EA	1	*	*	*	*	*	*	*	..	1	6	
		8768050 (19204)													
P-O-	1305-792-7388	PROJECTILE, 25-MM, TRAINING: M379.....	EA	20	*	*	*	*	*	*	*	..	1	1	
		8768051 (19206)													
P-O-	1305-792-7389	HOSE PLUG, PROJECTILE:	EA	20	*	*	*	*	*	*	*	..	2	1	
		8768054 (19206)													
P-O-	5340-808-3957	RING, RETAINING: INT, S, CD- W/CHROMATE,	EA	20	*	*	*	*	*	*	*	..	2	2	
		0.620 HOUSING DIA MS 16625-1056 (96906)													
P-O-	1305-792-7390	RING, RETAINING:.....	EA	24	*	*	*	*	*	*	*	..	2	3	
		8768056 (19206)													
P-O-	1305-792-7391	SPRING, HELICAL, COMPRESSION:.....	EA	20	*	*	*	*	*	*	*	..	2	4	
		8768057 (19206)													
P-O-	1305-792-7392	PIN, FIRING: S	EA	20	*	*	*	*	*	*	*	..	2	5	
		8768055 (19206)													
X1	BODY, PROJECTILE, M379.....	..	20	2	6	
		8768052 (19204)													
REGULATOR ASSEMBLY															
P-F-R	6920-977-2689	GAGE, COMPRESSED AIR, 0-150 PSI:	EA	1	*	*	*	*	*	*	*	..	3	1	
		8768018 (19206)													
P-F-R	6920-977-2690	GAGE, COMPRESSED AIR, 0-3000 PSI:	EA	1	*	*	*	*	*	*	*	..	3	2	
		8768021 (19206)													
P-O-	5330-789-0468	GASKET: CONNECTOR ASSY.....	EA	1	*	*	*	*	*	*	*	..	3	3	
		8768065 (19204)													
P-F-	6920-977-2693	CONNECTOR ASSEMBLY:.....	EA	1	*	*	*	*	*	*	*	..	3	4	
		8768064 (19206)													
P-F-	4730-698-4042	CONNECTOR REGULATION ASSEMBLY:.....	EA	1	*	*	*	*	*	*	*	..	3	5	
		AN 911-25 (88044)													
P-F-	4730-278.3990	TEE, REGULATOR:.....	EA	1	*	*	*	*	*	*	*	..	3	6	
		AN 917-2 (88044)													
P-F-	6920-977-2688	COUPLING, REGULATOR ASSEMBLY.....	EA	1	*	*	*	*	*	*	*	..	3	7	
		8768015 (19206)													
P-F-R	4820-065-4343	VALVE, SAFETY RELIEF: REGULATOR ASSY	EA	1	*	*	*	*	*	*	*	..	3	8	
		8767993 (19206)													
P-F-R	6920-065-4345	REGULATOR ASSEMBLY:.....	EA	1	*	*	*	*	*	*	*	..	3	9	
		8768039 (19206)													

SECTION IV. REPAIR PARTS LIST--Continued

TM 9-6920-212-24P

(1) SMR CODE	(2) FEDERAL STOCK NUMBER	(3) DESCRIPTION REFERENCE NUMBER & MFR. CODE USABLE ON CODE		(4) UNIT OF MEAS	(5) QTY INC IN UNIT	(6) 30 DAY DS MAINT ALLOWANCE			(7) 30DAY GS MAINT ALLOWANCE			(8) 1-YR ALW PER 100 EQUIP CNTGCY	(9) DEPOT MAINT ALW PER 100 EQUIP	(10) ILLUSTRATION	
						(a)	(b)	(c)	(a)	(b)	(c)			(a)	(b)
						1-20	21-50	51-100	1-20	21-50	51-100			FIGURE NO.	ITEM NO/
P-F-	5310-877-5797	BARREL AND VALVE ASSEMBLY NUT, SELF-LOCKING, HEXAGON: S, CD-PLTD,..... NYLON INSERT, NO. 10-32UNF-2B, 0.376 W ACROSS FLATS, 0.281 H, 250 DEG F TEMP RATING MS 21044-N3 (96906)		EA	1	*	*	*	*	*	*	*	..	4	1
P-F-	5310-809-4058	WASHER, FLAT: S, CD- OR ZN-CHROMATE FIN., 9/32 ID, 5/8 OD, 0.065 THK, 1/4 SCREW SIZE MS 27183-10 (96906)		EA	2	*	*	*	*	*	*	*	..	4	2
A-F-	RING, ADAPTER BARREL ASSEMBLY:..... 8767997 (19204)		..	1	4	3
P-F-	5305-723-9383	SETSCREW:..... MS 51963-67 (96906)		EA	1	*	*	*	*	*	*	*	..	4	4
P-F-	6920-977-2685	RING, ADAPTER BARREL:..... 8767998 (19206)		EA	1	*	*	*	*	*	*	*	..	4	5
P-F-	5315-839-5820	PIN,COTTER: S, CD-CHROMATE FIN., 1/16 DIA, 3/4 LG. MS 24665-134 (96906)		EA	1	*	*	*	*	*	*	*	..	4	6
P-F-	6920-789-0469	BAR, FIRING, MANUAL:..... 8767995 (19204)		EA	1	*	*	*	*	*	*	*	..	4	7
P-F-	6920-789-0471	TUBE, AIR ASSEMBLY:..... 8768000 (19204)		EA	1	*	*	*	*	*	*	*	..	4	8
P-F-	6920-789-0470	BARREL: STAINLESS STEEL, 1 OD BY 0.065 WALL THK, 23 LG, 1/81-16 CLASS 2 THD, 3/4 LG ONE END 8767996 (19204)		EA	1	*	*	*	*	*	*	*	..	4	9
X1-	SPRING, HELICAL, COMPRESSION..... 8767999 (19204)		..	1	4	10
P-F-R	6920-789-0474	VALVE ASSEMBLY:..... 8768002 (19204)		EA	1	*	*	*	*	*	*	*	..	4	11
P-F-	6920-977-2686	SPRING, VALVE STEM:..... 8768003 (19206)		EA	1	*	*	*	*	*	*	*	..	4	--

SECTION IV. REPAIR PARTS LIST--Continued

TM 9-6920-212-24P

(1) SMR CODE	(2) FEDERAL STOCK NUMBER	(3) DESCRIPTION REFERENCE NUMBER & MFR. CODE USABLE ON CODE		(4) UNIT OF MEAS	(5) QTY INC IN UNIT	(6) 30 DAY DS MAINT ALLOWANCE			(7) 30DAY GS MAINT ALLOWANCE			(8) 1-YR ALW PER 100 EQUIP CNTGCY	(9) DEPOT MAINT ALW PER 100 EQUIP	(10) ILLUSTRATION	
						(a)	(b)	(c)	(a)	(b)	(c)			(a)	(b)
						1-20	21-50	51-100	1-20	21-50	51-100			FIGURE NO.	ITEM NO/
P-F-	5305-151-3720	CARRYING CASE SCREW, WOOD:EA		EA	52	*	*	*	*	*	*	..	1	12	
M-F-		MS 35493-32 (96906) PLATE, NAME:	1	1	13	
X		MS 63045 (96906) CHAIN, NO. 6, S, 24 LG	1	5	15	
P-F-	5305-889-3006	42-C-16887 (19204) THUMBSCREW: FL-PT, S, CD-W/CHROMATE, 1/4-20 ...		EA	9	*	*	*	*	*	*	..	5	16	
P-F-	5305-723-9387	UNC 2A, 1/2 LG MS 21317-42 (96906) SETSCREW:.....		EA	4	*	*	*	**	*	*	..	5	20	
P-F-	5310-889-2606	MS-51963-63 (96906) NUT, PLAIN, WING: S,CD-OR ZN-W/CHROMATE,.....		EA	4	*	*	*	*	*	*	..	5	21	
P-F-	6920-759-9809	3/8-16UNC-2A, 1-13/32 O/A W, 47/64 O/A H MS 35425-42 (96906) HOLDER, GAGE FACE COVER: CARRYING CASE		EA	8	*	*	*	*	*	*	..	5	22	
P-O-	7690-891-7886	8768033 (19206) DECAL WARNING: BLACK LEGEND, RED BACK-.....		EA	1	*	*	*	*	*	*	..	5	23	
		GROUND, 6.500 LG, 6.000W 11577604 (19206)													

SECTION V. SPECIAL TOOLS LIST

TM 9-6920-212-24P

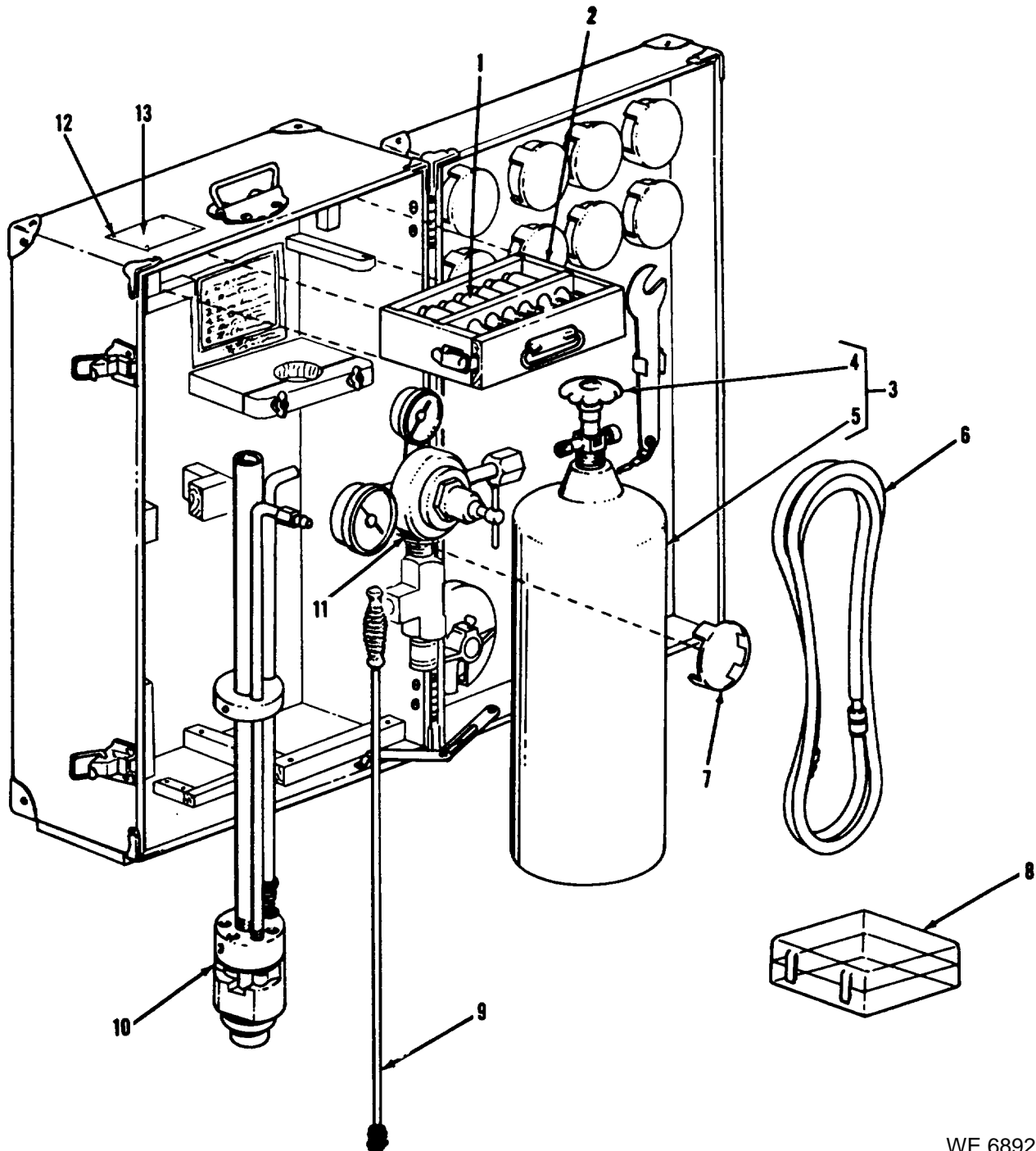
(1) SMR CODE	(2) FEDERAL STOCK NUMBER	(3) DESCRIPTION REFERENCE NUMBER & MFR. CODE USABLE ON CODE		(4) UNIT OF MEAS	(5) QTY INC IN UNIT	(6) 30 DAY DS MAINT ALLOWANCE			(7) 30DAY GS MAINT ALLOWANCE			(8) 1-YR ALW PER 100 EQUIP CNTGCV	(9) DEPOT MAINT ALW PER 100 EQUIP	(10) ILLUSTRATION	
						(a)	(b)	(c)	(a)	(b)	(c)			(a)	(b)
						1-20	21-50	51-100	1-20	21-50	51-100			FIGURE NO.	ITEM NO/
P-C-	6920-789-0465	COVER, GAGE FACE: 4.2-IN., 500 RANGE		EA	1	*	*	*	*	*	*	*	..	1	7
		8768041 (19204)													
P-C-	6920-977-2687	BOX, BLANK CARTRIDGE:.....		EA	1	*	*	*	*	*	*	*	..	1	8
		8768005 (19206)													
P-C-	1005-977-2691	BRUSH, CLEANING: BARREL.....		EA	1	*	*	*	*	*	*	*	..	1	9
		8768034 (19206)													
P-C-	6920-789-0463	COVER, GAGE FACE: 60-MM, 1000 RANGE.....		EA	1	*	*	*	*	*	*	*	..	5	2
		8768045 (19204)													
P-C-	6920-789-0464	COVER, GAGE FACE: 60-MM, 2000 RANGE.....		EA	1	*	*	*	*	*	*	*	..	5	3
		8768046 (19204)													
P-C-	6920-789-0459	COVER, GAGE FACE: 81-MM, 500 RANGE.....		EA	1	*	*	*	*	*	*	*	..	5	4
		8768047 (19204)													
P-C-	6920-789-0460	COVER, GAGE FACE: 81-MM, 1000 RANGE.....		EA	1	*	*	*	*	*	*	*	..	5	5
		8768048 (19204)													
P-C-	6920-789-0461	COVER, GAGE FACE: 81-MM, 2000 RANGE.....		EA	1	*	*	*	*	*	*	*	..	5	6
		8768049 (19204)													
P-C-	6920-789-0462	COVER, GAGE FACE: 60-MM, 500 RANGE.....		EA	1	*	*	*	*	*	*	*	..	5	7
		8768044 (19204)													
P-C-	6920-789-0466	COVER, GAGE FACE: 4.2-IN., 1000 RANGE		EA	1	*	*	*	*	*	*	*	..	5	8
		8768042 (19204)													
P-C-	6920-789-0467	COVER, GAGE FACE: 4.2-IN., 2000 RANGE		EA	1	*	*	*	*	*	*	*	..	5	9
		8768043 (19206)													
P-C-	5120-240-5292 KEY,	SOCKET HEAD SCREW:		EA	1	*	*	*	*	*	*	*	..	5	10
		41-W-2450 (19204)													
P-C-	6920-065-4342	BAR, PROJECTILE CLEANER:.....		EA	1	*	*	*	*	*	*	*	..	5	11
		8767992 (19206)													
P-C-	0920-789-0458	RING, ADAPTER, INNER: 4.2-IN.		EA	1	*	*	*	*	*	*	*	..	5	12
		8768068 (19204)													
P-C-	6920-789-0457	RING, ADAPTER, INNER: 81-MM.....		EA	1	*	*	*	*	*	*	*	..	5	13
		8768069 (19204)													
P-C-	5120-977-2694	WRENCH, TRAINER, MORTAR:.....		EA	1	*	*	*	*	*	*	*	..	5	14
		8768085 (19206)													
P-C-	6920-789-0455	RING, ADAPTER, OUTER: 60-MM.....		EA	1	*	*	*	*	*	*	*	..	5	17
		8768071 (19204)													
P-C-	6920-789-0454	RING, ADAPTER, OUTER: 81-MM.....		EA	1	*	*	*	*	*	*	*	..	5	18
		8768072 (19204)													
P-C-	6920-789-0456	RING, ADAPTER, OUTER: 4.2-IN.....		EA	1	*	*	*	*	*	*	*	..	5	19
		8768070 (19204)													

FEDERAL STOCK NUMBER AND REFERENCE NUMBER INDEX

<i>STOCK NUMBER</i>	<i>FIG. No.</i>	<i>ITEM No.</i>	<i>STOCK NUMBER</i>	<i>FIG. No.</i>	<i>ITEM No.</i>
1005-977-2691	1	9	6920-789-0456	5	19
1305-792-7388	1	1	6920-789-0457	5	13
1305-792-7389	2	1	6920-789-0458	5	12
1305-792-7390	2	3	6920-789-0459	5	4
1305-792-7391	2	4	6920-789-0460	5	5
1305-792-7392	2	5	6920-789-0461	5	6
4730-098-4042	3	5	6920-789-0462	5	7
4730-278-3990	3	6	6920-789-0463	5	2
4820-065-4343	3	8	6920-789-0464	5	3
5120-240-5292	5	10	6920-789-0465	1	7
5120-977-2694	5	14	6920-789-0466	5	8
5305-151-3720	1	12	6920-789-0467	5	9
5305-723-9383	4	4	6920-789-0469	4	7
5305-723-9387	5	20	6920-789-0470	4	9
5305-889-3006	5	16	6921-789-0471	4	8
5310-809-4058	4	2	6920-789-0473	1	6
5310-877-5797	4	1	6920-789-0474	4	11
5310-889-2606	5	21	6920-977-2685	4	5
5315-839-5820	4	6	6920-977-2687	1	8
5330-789-0468	3	3	6920-977-2688	3	7
5340-808-3957	2	2	6920-977-2689	3	1
6920-065-4342	5	11	6920-977-2690	3	2
6920-065-4345	3	9	6920-977-2693	3	4
6920-759-9809	5	22	7690-891-7886	5	23
6920-789-0454	5	18	8120-884-1923	1	4
6920-789-0455	5	17	8120-884-1924	1	5

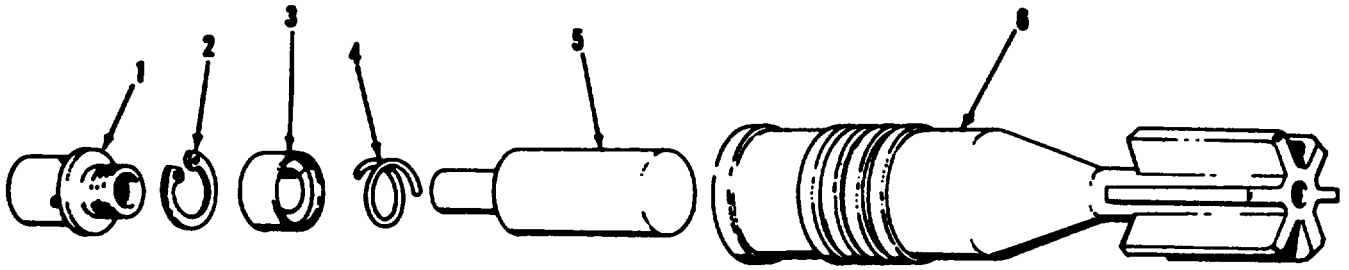
SECTION VI. FEDERAL STOCK NUMBER AND REFERENCE
NUMBER INDEX--Continued

<i>Reference No.</i>	<i>Mfg Code</i>	<i>Fig No.</i>	<i>Item No.</i>	<i>Reference No.</i>	<i>Mfg Code</i>	<i>Fig No.</i>	<i>Item No.</i>
AN911-25	88044	3	5	8768033	19206	5	22
AN917-2	88044	3	6	8768034	19206	1	9
MS16625-10516	96906	2	2	8768036	19206	1	5
MS21044-N3	96906	4	1	8768037	19206	1	4
MS21317-42	96906	5	16	8768039	19206	3	9
MS24665-134	96906	4	6	8768041	19204	1	7
MS27183-10	96906	4	2	8768042	19204	5	8
MS35425-42	96906	5	21	8768043	19204	5	9
MS35493-32	96906	1	12	8768044	19204	5	7
MS51963-63	96906	5	20	8768045	19204	5	2
MS51963-67	96906	4	4	8768046	19204	5	3
MS63045	96906	1	13	8768047	19204	5	4
11577604	19206	5	23	8768048	19204	5	5
41-W-2450	19204	5	10	8768049	19204	5	6
42-C-16887	19204	5	15	8768050	19204	1	6
8767992	19206	5	1	8768051	19206	1	1
8767993	19206	3	8	8768052	10204	2	6
8767995	19204	4	7	8768054	19206	2	1
8767996	19204	4	9	8768055	19206	2	5
87679097	19204	4	3	8768056	19206	2	3
8767998	19206	4	5	8768057	19206	2	4
8767999	19204	4	10	8768064	19206	3	4
8768000	19204	4	8	8768065	19204	3	3
8768002	19204	4	11	8768068	19204	5	12
8768003	19206	4	--	8768069	19204	5	13
8768005	19206	1	8	8768070	19204	5	19
8768015	19206	3	7	8768071	19204	5	17
8768018	19206	3	1	8768072	19204	5	18
8768021	19206	3	2	8768085	10204	1	4



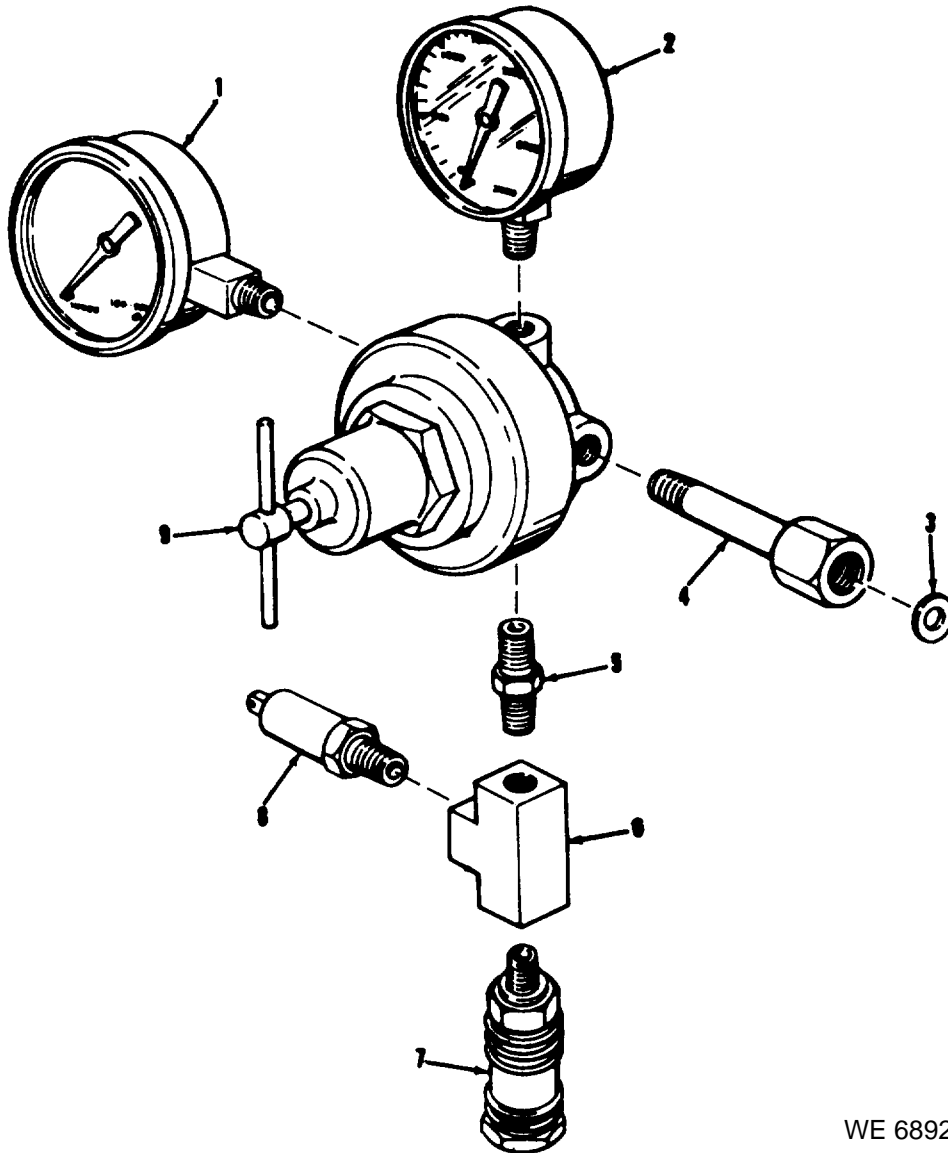
WE 68925

Figure 1. Subcaliber mortar trainer M32A1—partially exploded view.



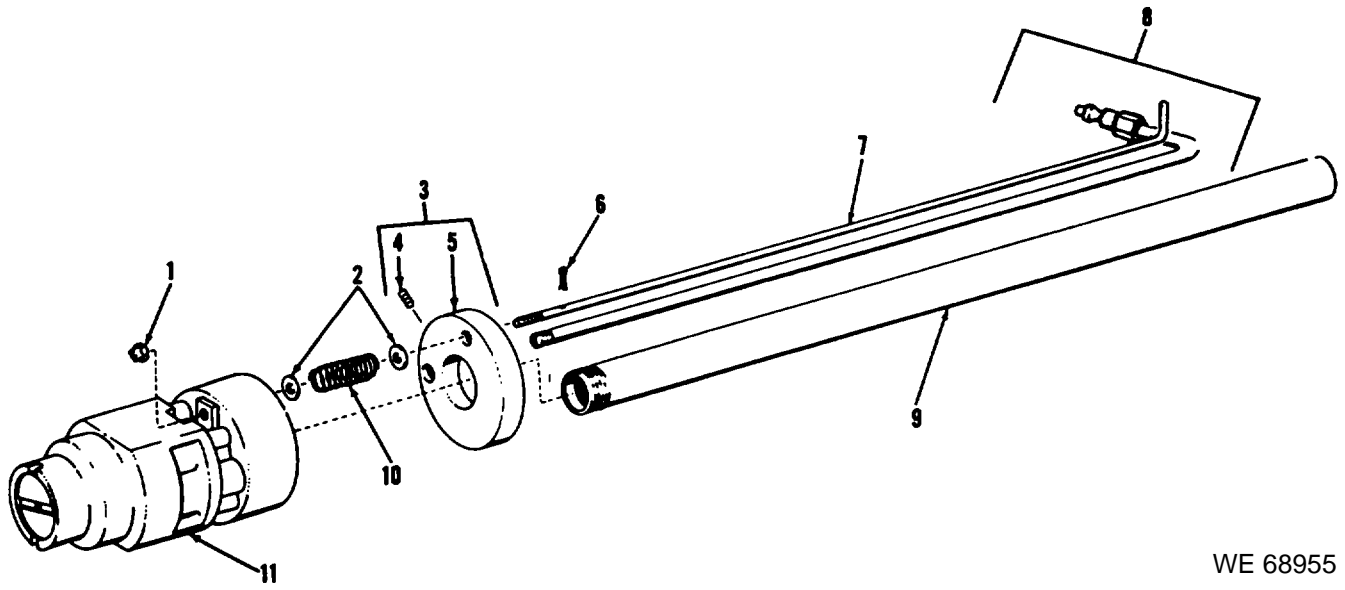
WE 68954

Figure 2. 25-MM training projectile M379—exploded view.



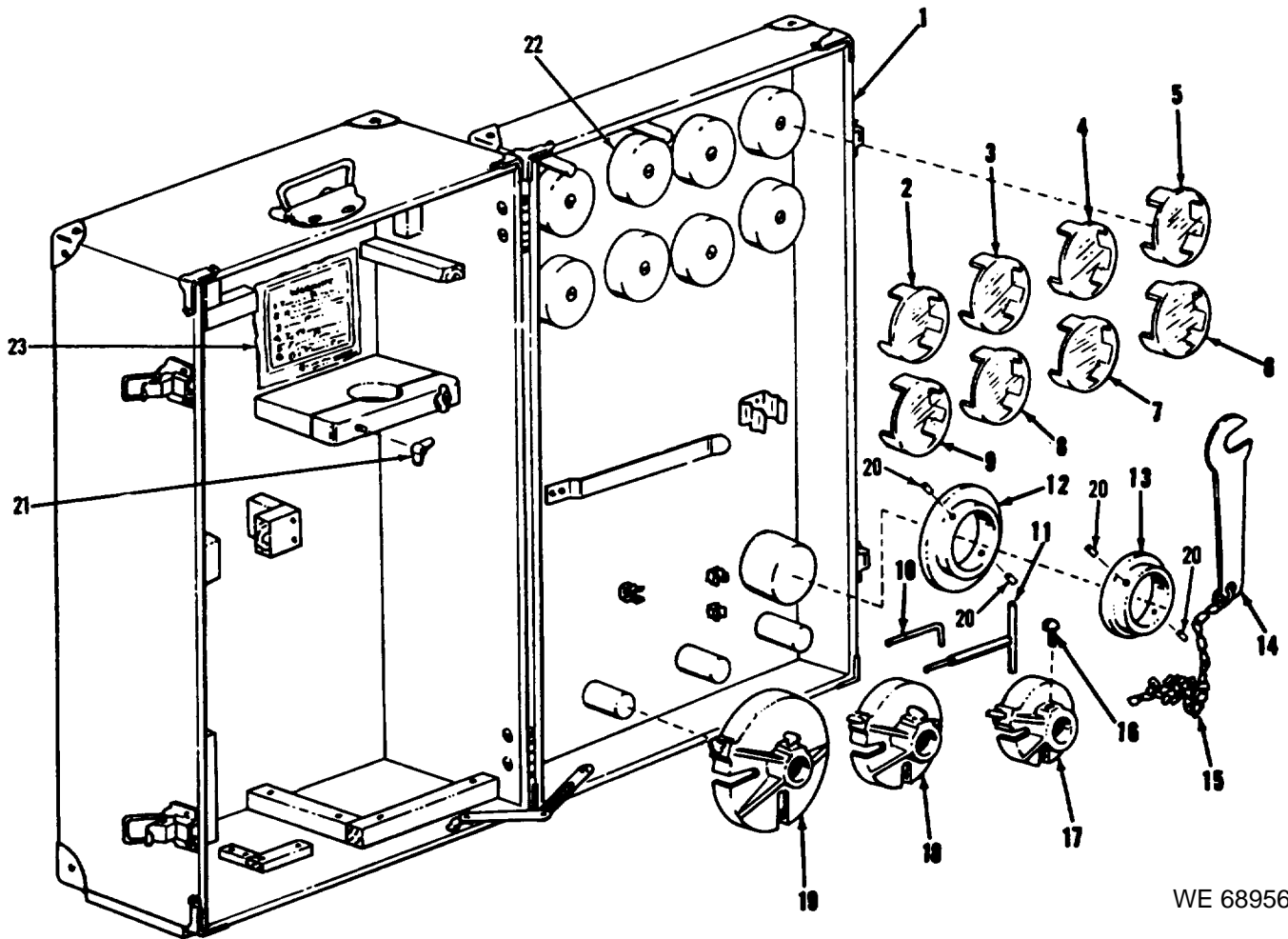
WE 68924

Figure 3. Regulator assembly—exploded view.



WE 68955

Figure 4. Barrel and valve assembly—exploded view.



WE 68956

Figure 5. Trainer carrying case w/tools and equipment.

TM 9-6920-212-24P

By Order of the Secretary of the Army:

Official:

VERNE L. BOWERS,
*Major General, United States Army,
The Adjutant General.*

W. C. WESTMORELAND,
*General, United States Army,
Chief of Staff.*

Distribution:

To be distributed in accordance with DA Form 12-40 (qty rqr block No. 67) organizational maintenance requirements for TRAINER, MORTAR: PNEUMATIC, M32A1.

*U.S. GOVERNMENT PRINTING OFFICE : 1993 O - 342-421/63356

RECOMMENDED CHANGES TO EQUIPMENT TECHNICAL PUBLICATIONS



THEN... JOT DOWN THE DOPE ABOUT IT ON THIS FORM, CAREFULLY TEAR IT OUT, FOLD IT AND DROP IT IN THE MAIL!

SOMETHING WRONG WITH THIS PUBLICATION?

FROM: (PRINT YOUR UNIT'S COMPLETE ADDRESS)

DATE SENT

PUBLICATION NUMBER

TM 11-5825-270-10

PUBLICATION DATE

23 Jul 81

PUBLICATION TITLE

Radio Frequency R-2176/FRN

BE EXACT... PIN-POINT WHERE IT IS

PAGE NO.	PARA-GRAPH	FIGURE NO.	TABLE NO.
----------	------------	------------	-----------

IN THIS SPACE TELL WHAT IS WRONG AND WHAT SHOULD BE DONE ABOUT IT:

TEAR ALONG PERFORATED LINE

PRINTED NAME, GRADE OR TITLE, AND TELEPHONE NUMBER

SIGN HERE:

DA FORM 2028-2
1 JUL 79

PREVIOUS EDITIONS ARE OBSOLETE.

P.S.—IF YOUR OUTFIT WANTS TO KNOW ABOUT YOUR RECOMMENDATION MAKE A CARBON COPY OF THIS AND GIVE IT TO YOUR HEADQUARTERS.

